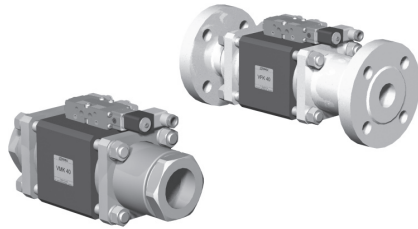


5-VMK 40
5-VFK 40

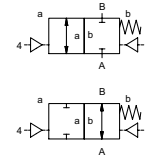
valve type with pilot valve

coaxial valve

type VMK 40 VFK 40



2/2 way valve externally controlled
pressure range PN 0-100 bar
orifice DN 40 mm
connection thread/flange
function valve normally closed symbol **NC**
 valve normally open symbol **NO**



△ Above stated body materials refer to the valve port connections that get in contact with the media only!

design pressure balanced, with spring return
body materials ① ② steel, galvanized
 ③ ⑤ without non-ferr. metals
 ④ steel, nickel plated ⑥ stainless steel
valve seat synthetic resin on metal
seal materials NBR PTFE, FPM, CR, EPDM

details needed for main valve

- orifice
- port
- function NC/NO
- operating pressure
- flow rate
- media
- media temperature
- ambient temperature
- type of actuation

details needed for pneumatic actuation

- nominal voltage
- type of protection
- actuation pressure range min/max
- low wattage coil, actuation pressure range 4-7 bar
- pilot valve type

details needed for hydraulic actuation

- actuation pressure range min/max
- hydraulic control valve function

		general specifications	options
ports	VMK	threads G 1 1/2 - G 2	special threads
	VFK	flanges PN 100	special flanges
function		NC	NO
pressure range	bar	0-64/0-100	> 100 bar
Kv value	m ³ /h	31,0	
vacuum	leak rate		< 10 ⁻⁶ mbar·l·s ⁻¹
pressure-vacuum	P ₁ ↔ P ₂		pressure side max. 100 bar vacuum side leak rate < 10 ⁻⁶ mbar·l·s ⁻¹
back pressure	P ₂ > P ₁		available (max. 16 bar)
media		gaseous - liquid - highly viscous - gelatinous - pasty - contaminated	version available
abrasive media			
damping	opening		
	closing	by throttles on pilot valve	
flow direction	A ↔ B	as marked	bi-directional upon request
switching cycles	1/min	150	
switching time	ms	opening 100-3000 closing 100-3000	
media temperature	°C	direct mounted pilot valve 60	remote mounted pilot valve outside temper-
ambient temperature	°C	direct mounted pilot valve 50	ature range of media max.160°C
flush ports			available
leak ports			available
limit switches			inductive/mechanical upon request
manual override		via pilot valve	
approvals			LR/GL/WAZ
mounting			mounting brackets
weight	kg	VMK 11,3 VFK 13,6	
additional equipment			upon request

electrical specifications

		options
nominal voltage	U _n	DC 24V special voltage upon request
	U _n	AC 230V 50 Hz special voltage upon request
power consumption	DC	4,8 W 2,5 W
	AC	pick up 11,0 VA holding 8,5 VA
protection	IP 65 (P54)	acc. DIN 40 050
energized duty rating	ED	100%
connection		plug acc. DIN EN 175301-803 form B, 4 positions x 90° / wire diameter 6-8 mm
additional equipment		illuminated plug with varistor
optional	M12x1	connector acc. DESINA connector acc. VDMA
max. temperature	media	60°C
	ambient	50°C
explosion proof	EEx m II T5	nominal voltage U _n direct current 24 V 3,25 W
		power consumption alternating current 230 V 50 Hz 2,90 W

pneumatic specifications

		options
actuation pressure range	bar	4-10
air consumption	cm ³ /stroke	65
cycle speed		main valve speed variable by throttles on pilot valve
control		preferably 5/2-way pilot valve
pilot valve interface	co-ax / NAMUR	ISO 1
actuator ports	2/4	G 1/4

hydraulic specifications

		options
actuation pressure range	bar	10-30 / 30-60
control		preferably 4/2-way control valve
actuator ports	X/Y	G 1/4 NPT 1/4

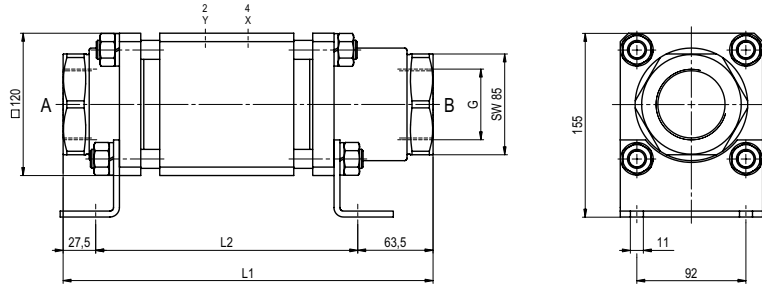
⚠ The valves' technical design is based on media and application requirements. This can lead to deviations from the general specifications shown on the data sheet with regards to the design, sealing materials and characteristics.

⚠ If order or application specifications are incomplete or imprecise there exists a risk of an incorrect technical design of the valve for the required application. As a consequence, the physical and / or chemical properties of the materials or seals used, may not be suitable for the intended application.

■ specifications not highlighted are standard
 ■ specifications highlighted in grey are optional

type VMK 40

function: **NC**
closed when not energized

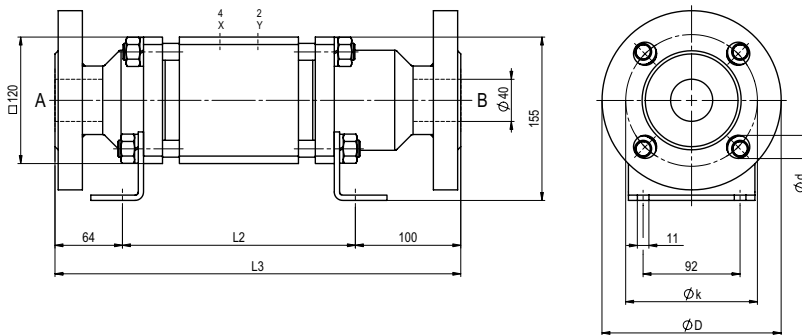


constructive length	L1	L2	L3
standard	312	221	385
with 1/2 inductive limit switches	312	221	385
with force-feed lubrication nipple	312	221	385
with mechanical limit switches	-	-	-

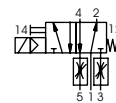
flanges PN	DIN	øD	øk	ød
100	2637	170	125	22

type VFK 40

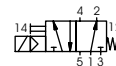
function: **NO**
open when not energized



pneumatic actuation (separately)



5/2-way-pilot valve
flow rate 700 l/min
pressure range 3-10 bar G 1/8



5/2-way-pilot valve ISO 1
flow rate 700 l/min
pressure range 3-10 bar G 1/4

The application-specific layout relating to temperature, pressure conditions, switching behavior, media and its consistency may restrict the range of use or necessitate relevant modifications to materials used and seal arrangements.

Rights reserved to make technical alterations • Not responsible for printing errors • Detailed drawings can be obtained upon request