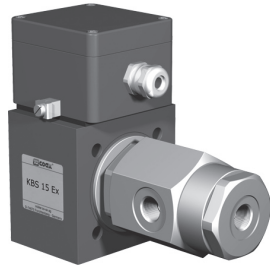
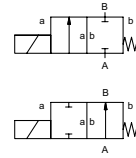


lateral valve

type **KBS 15 Ex**



2/2 way valve **direct acting**
pressure range PN 0-150 bar
orifice DN 1,5-3 mm
connection thread
function valve normally closed symbol **NC**
 valve normally open symbol **NO**



△ Above stated body materials refer to the valve port connections that get in contact with the media only!

design direct acting, with spring return
body materials ① brass ②
 ③ brass, nickel plated ⑤
 ④ ⑥ stainless steel
valve seat synthetic resin on metal
seal materials NBR FPM

details needed

- orifice
- port
- function NC/NO
- operating pressure
- flow rate
- media
- media temperature
- ambient temperature
- nominal voltage

	general specifications			options			
ports	KBS	threads G 3/8		special threads			
function		NC		NO			
pressure range	bar	40	100	150	100	300	500
	DN	3	2	1,5	3	2	1,5
Kv value	l/min	5,2	1,3	1,1	5,2	1,3	1,1
vacuum	leak rate				< 10 ⁻⁶ mbar·l/s ¹		
pressure-vacuum	P ₁ ↔ P ₂				upon request		
back pressure	P ₂ > P ₁				upon request		
media	gaseous - liquid						
abrasive media							
damping	opening						
	closing						
flow direction	A ↔ B	as marked		bi-directional upon request			
switching cycles	1/min	120		300			
switching time	ms	opening 250		closing 160		opening 120	closing 80
media temperature	°C	DC: -20 to +40					
		AC: -20 to +40					
ambient temperature	°C	DC: -20 to +40					
		AC: -20 to +40					
limit switches							
manual override							
approvals	WAZ						
mounting	mounting holes						
weight	kg	4,2					
additional equipment	upon request						

⚠ The valves' technical design is based on media and application requirements. This can lead to deviations from the general specifications shown on the data sheet with regards to the design, sealing materials and characteristics.

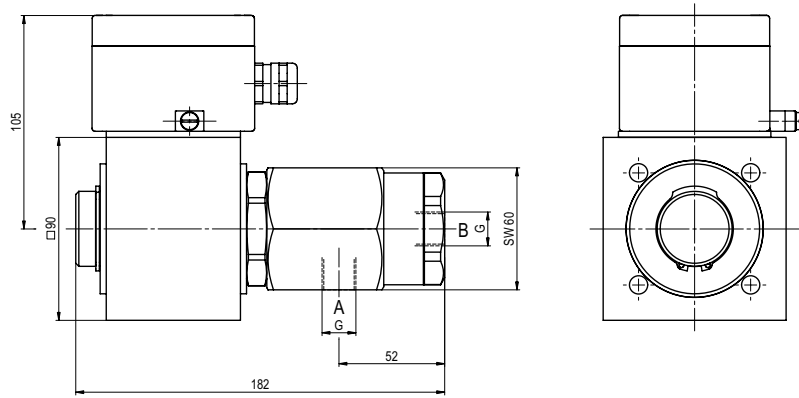
⚠ If order or application specifications are incomplete or imprecise there exists a risk of an incorrect technical design of the valve for the required application. As a consequence, the physical and / or chemical properties of the materials or seals used, may not be suitable for the intended application.

	electrical specifications			options				
nominal voltage	U _n	24 V	DC	special voltage				
	U _n	230 V	40-60 Hz	special voltage				
actuation	DC	direct-current magnet						
	AC	direct-current magnet with separate rectifier outside of the explosion-proof area			sand sealed rectifier			
insulation rating	H	180°C						
protection	IP65							
energized duty rating	ED	100%						
connection	M16x1,5	terminal box						
optional additional equipment								
current consumption	U _n	V-DC	24	200	48	98	110	220
	I _n	A	1,20	0,15	0,68	0,30	0,28	0,14
explosion proof	II 2 G Eex me II T4 and II 2 D IP65 T 130°C							
	PTB 02 ATEX 2120 X							
limit switches								

■ specifications not highlighted are standard
 ■ specifications highlighted in grey are optional

type **KBS 15 Ex**

function: **NC**
closed when not energized



type **KBS 15 Ex**

function: **NO**
open when not energized

